

Circuit Protector

GCP Series



Features

Electromagnetic Overcurrent Protection

Overcurrent is prevented by an electromagnet, which is more appropriate and effective for circuit protection than the thermostatic method (bimetal).

AC/DC Dual Voltage

AC/DC dual voltage, it can be used up to AC250V/DC60V (Single-pole), and DC120V (Double-pole).

Compact Size

17.5mm width per 1 pole, subcompact size compared to general circuit breakers. It requires less space for multiple units being installed.

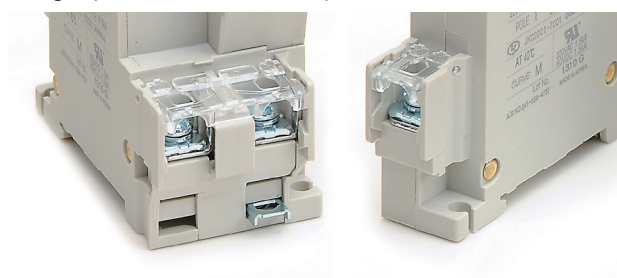
Optional Auxiliary Switch

The auxiliary switch function allows to check for operating trip by connecting with a buzzer or lamp.



Safe Design for Secure Insulation

The terminal part is protected by walls to prevent the wiring from being exposed. A cover is incorporated to enhance shock safety.



Approvals

GCP series is not only KC-certified (Korea) but also internationally recognized with its UL, CE, TUV, PSE, and CCC certifications.

(UL No.E241678, CE/TUV No.N8 13 06 44033 020, PSE No.JET6977-42010-1001:1006, CCC No. 20140103 07667415)

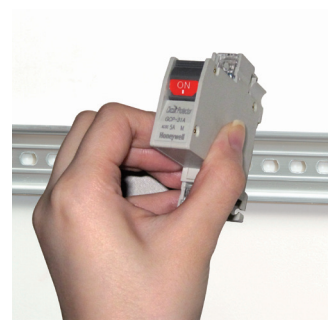
Easily Identified ON/OFF Indicator

ON/OFF indications are clearly visible even from a distance and ideal for control panel application. The trip handle is designed to prevent malfunction at a slight touch.



Easy Installation & Maintenance

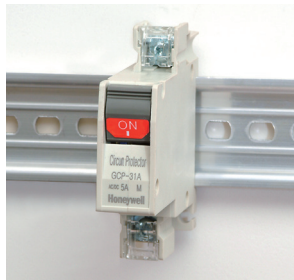


Compliance with the IEC standard, DIN rail mounting makes installation and removal easier than ever.



Others

- High vibration resistance (15G) and shock resistance (50G)
- Label discoloration prevented by laser marking
- Rated breaking capacity AC/DC 1,500A (KC: 2,500A)
- 3D drawing (3D model file) provided

Specifications

Model				GCP-31AN	GCP-32AN	GCP-33AN	
Appearance (DIN-rail mounting)							
No. of poles				Single	Double	Triple	
Rated voltage				AC250V/DC60V	AC250V/DC120V	AC250V <small>Note 1)</small>	
Rated current				0.1A, 0.3A, 0.5A, 1A, 2A, 3A, 5A, 7A, 10A, 15A, 20A, 25A, 30A			
Weight				77g	150g	220g	
Insulation resistance				100M Ohm min (500V insulation resistance tester)			
Rated breaking capacity	UL1077 CCC GB17701 PSE CE EN60934 IEC60934	AC	250V	1.5KA			
			60V	1.5KA	-	Note 1)	
		DC	120V	-	1.5KA		
			KC K60934	AC	220V		2.5KA
	60V	2.5KA			-		Note 1)
	DC	120V		-	2.5KA		
		Reference ambient temperature			+40°C		
	Operating ambient temperature			-10 ~ +60°C			
Permitted relative humidity			0 ~ 85%				
Operating type			Instantaneous (I), Medium Speed (M)				
Terminal	Body			M4 screw (25A or below): 1.2~1.5Nm, M5 screw (30A): 1.8~2.2Nm			
	Auxiliary switch			M3 screw: 0.8~1.0Nm			
Mounting			IEC 35mm rail and M4 screw				
Dielectric voltage			AC1500V (50/60Hz) for 1 min				
Vibration resistance			15G (147m/S²), IEC60068-2-6				
Shock resistance			50G (500m/S²), IEC60068-2-27				
Endurance			10,000 times (mechanical); 6,000 times (electrical)				
Accessories			Auxiliary switch (AX)				
Approvals			IEC60934, K60934, UL1077, GB17701				
KC certification (Korea)			JH02039-13001:13006				
CE certification (Europe)			N8 13 06 44033 020				
UL certification (US)			E241678				
PSE certification (Japan)			JET6977-42010-1001:1006				
CCC certification (China)			20140103 07667415				

Note 1) The triple-pole product is for AC only, not for DC.

Model Selection Guide

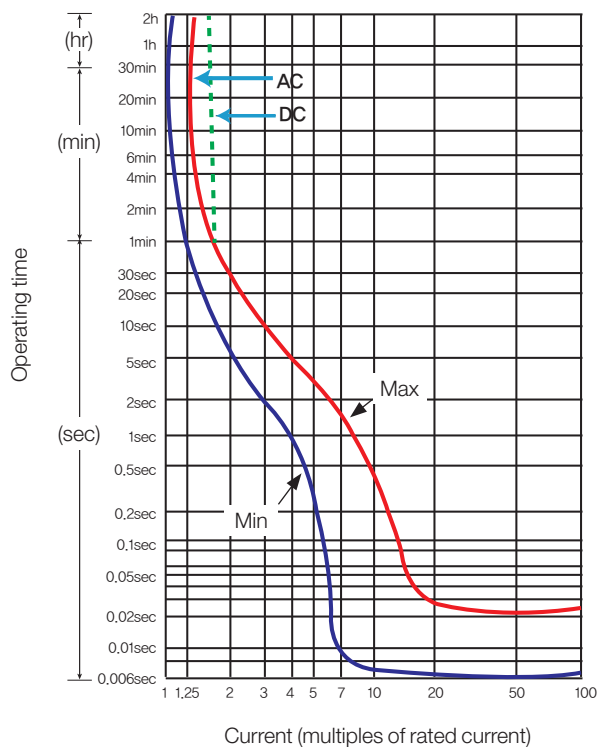
GCP-3	X	AN	X	XXXX	XX
Model Name	No. of poles	Connection	Operating	Rated current	Accessories
GCP-3	Single 1 Double 2 Triple 3	Standard DIN rail	Medium Speed M Instantaneous I	0.1A 7A 0.3A 10A 0.5A 15A 1A 20A 2A 25A 3A 30A 5A	Standard Auxiliary switch AX

Example 1) GCP-3 circuit protector; single-pole with DIN rail; Medium Speed; standard type of 3A rated current - GCP-31ANM3A

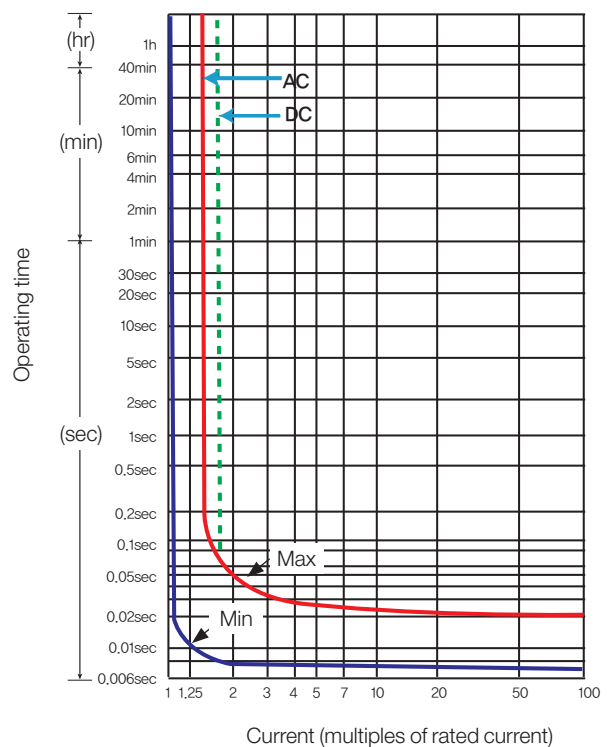
Example 2) GCP-3 circuit protector; double-pole with DIN rail; Medium Speed; auxiliary switch type of 0.5A rated current - GCP-32ANM0.5AAX

Characteristic Curve for Trip

Medium Speed

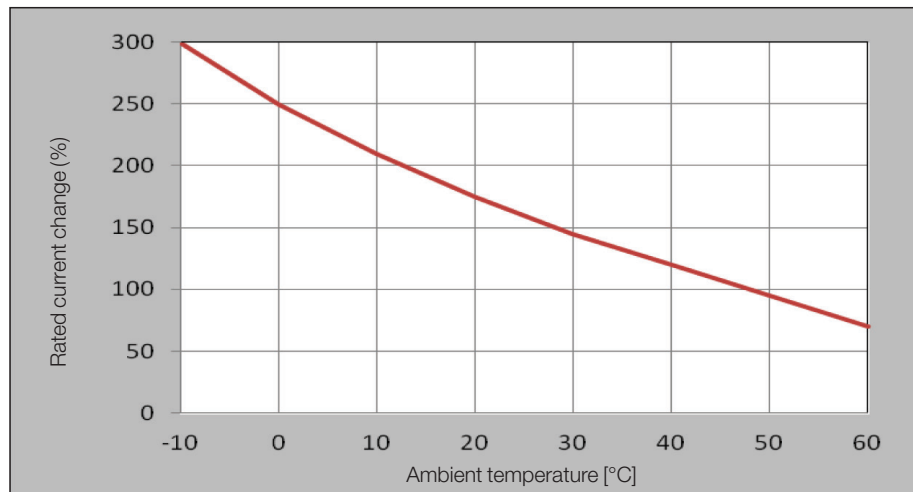


Instantaneous



Temperature Compensation Curve

The operating time for the Medium Speed (M) type is measured at the ambient temperature of 40°C. Refer to the ambient temperature compensation curve before use for the operating time for any other temperature range. The Instantaneous (I) type is not affected by the ambient temperature.



Rated Current Ratio by Mounting Position

It appears that the operating current is 90% or 110% depending on the mounting position.

Correct the rated current before use by referring to the figures below.

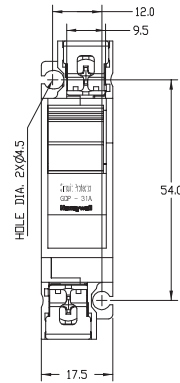
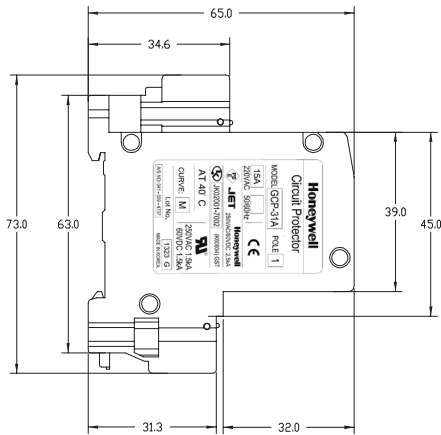
Vertical	Horizontal	Reverse vertical	Reverse horizontal
100%	110%	100%	90%

Vertical mounting (general)	Reverse vertical mounting

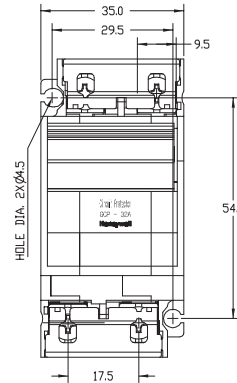
[Unit: mm]

External Dimensions

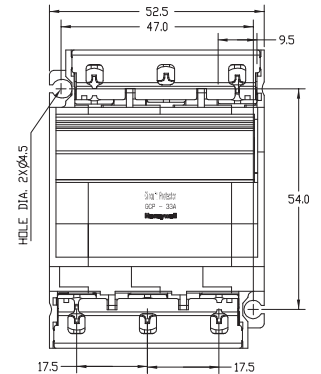
General Type



Single-pole

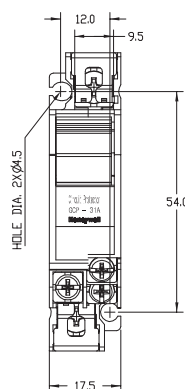
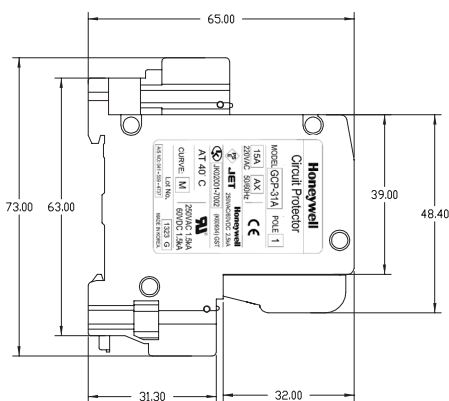


Double-pole

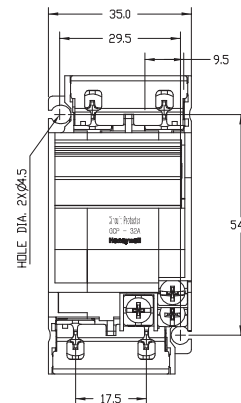


Triple-pole

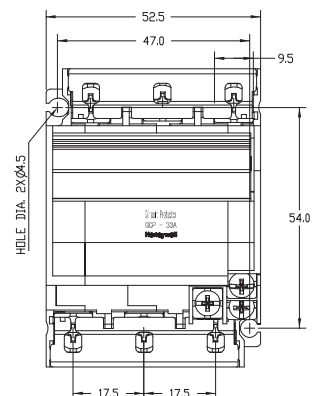
AX Type



Single-pole

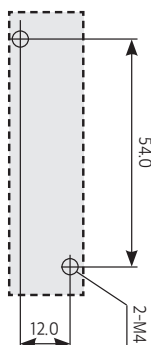


Double-pole

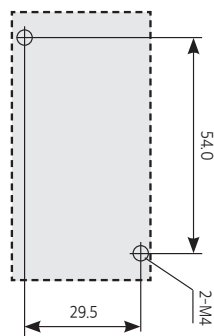


Triple-pole

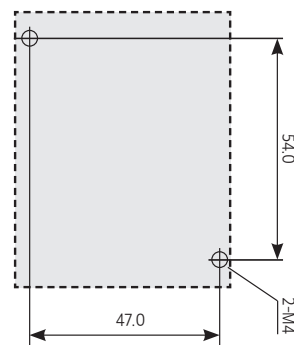
Hole Dimensions



Single-pole

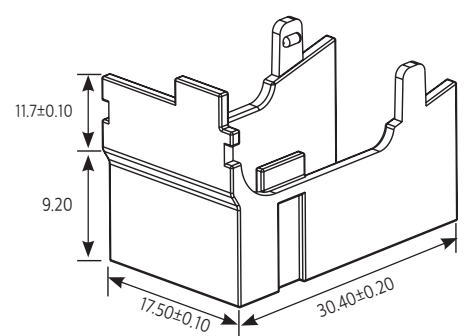


Double-pole



Triple-pole

Auxiliary(AX) Switch Cover



GCP Series

Circuit Protector

Warranty. Honeywell warrants goods of its manufacture as being free of defective materials and faulty workmanship. Honeywell's standard product warranty applies unless agreed to otherwise by Honeywell in writing; please refer to your order acknowledgement or consult your local sales office for specific warranty details. If warranted goods are returned to Honeywell during the period of coverage, Honeywell will repair or replace, at its option, without charge those items it finds defective.

The foregoing is buyer's sole remedy and is in lieu of all warranties, expressed or implied, including those of merchantability and fitness for a particular purpose. In no event shall Honeywell be liable for consequential, special, or indirect damages.

While we provide application assistance personally, through our literature and the Honeywell web site, it is up to the customer to determine the suitability of the product in the application.

Specifications may change without notice. The information we supply is believed to be accurate and reliable as of this printing. However, we assume no responsibility for its use.

WARNING

PERSONAL INJURY

DO NOT USE these products as safety or emergency stop devices or in any other application where failure of the product could result in personal injury.

Failure to comply with these instructions could result in death or serious injury.

Sensing & Product Solutions

Honeywell

5F, Sangam IT Tower 1590, Sangam-dong,
Mapo-gu, Seoul, 121-835, Korea
Phone: +82-2-799-6097 Fax: +82-2-792-9013
E-mail: scinfo@honeywell.com
<http://www.honeywell.co.kr/acs/sc>

Copyright © May 2016 Honeywell Co., Ltd.
All rights reserved.

Honeywell